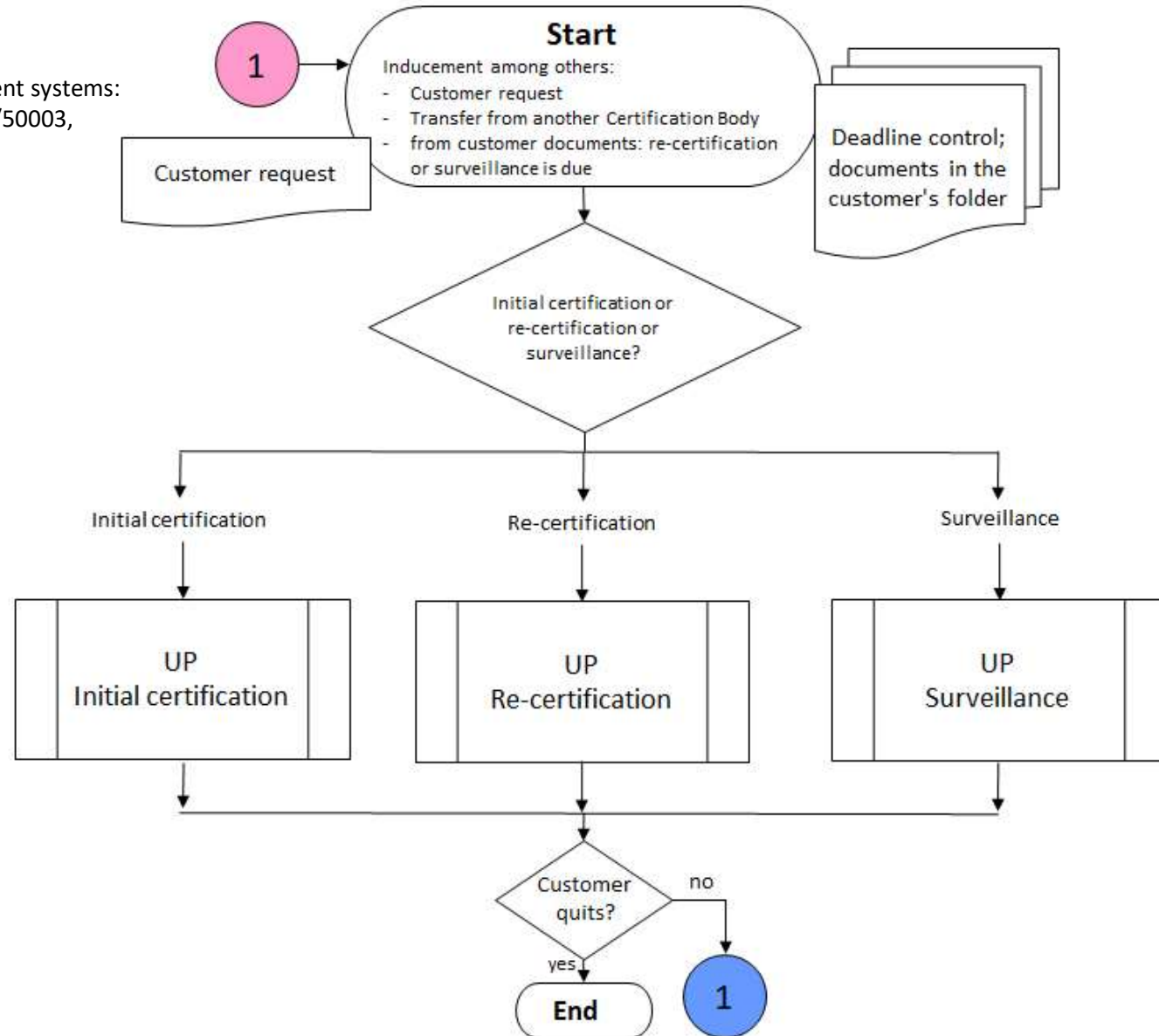


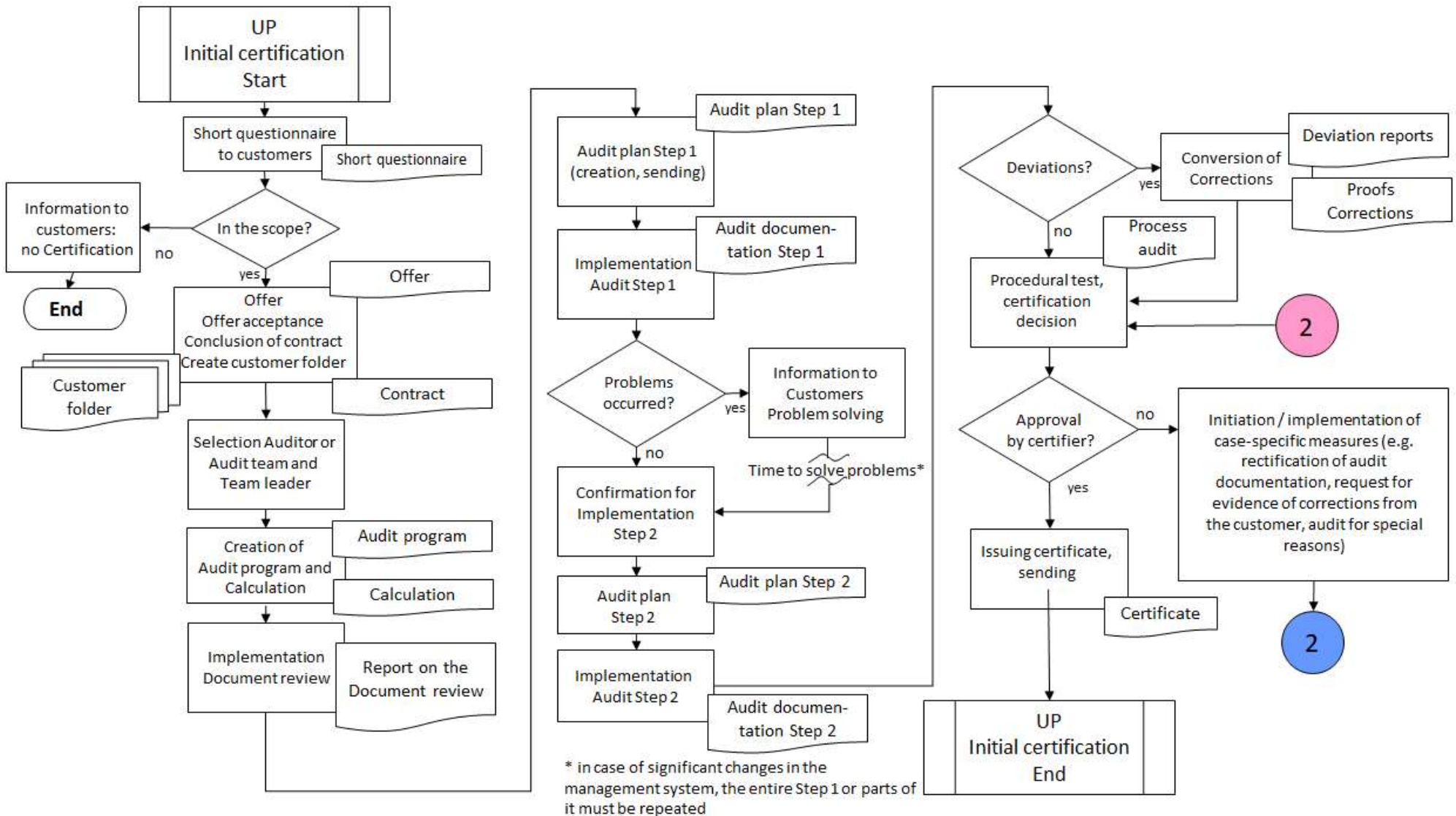
Certification Management Systems

9.1.1 Certification process

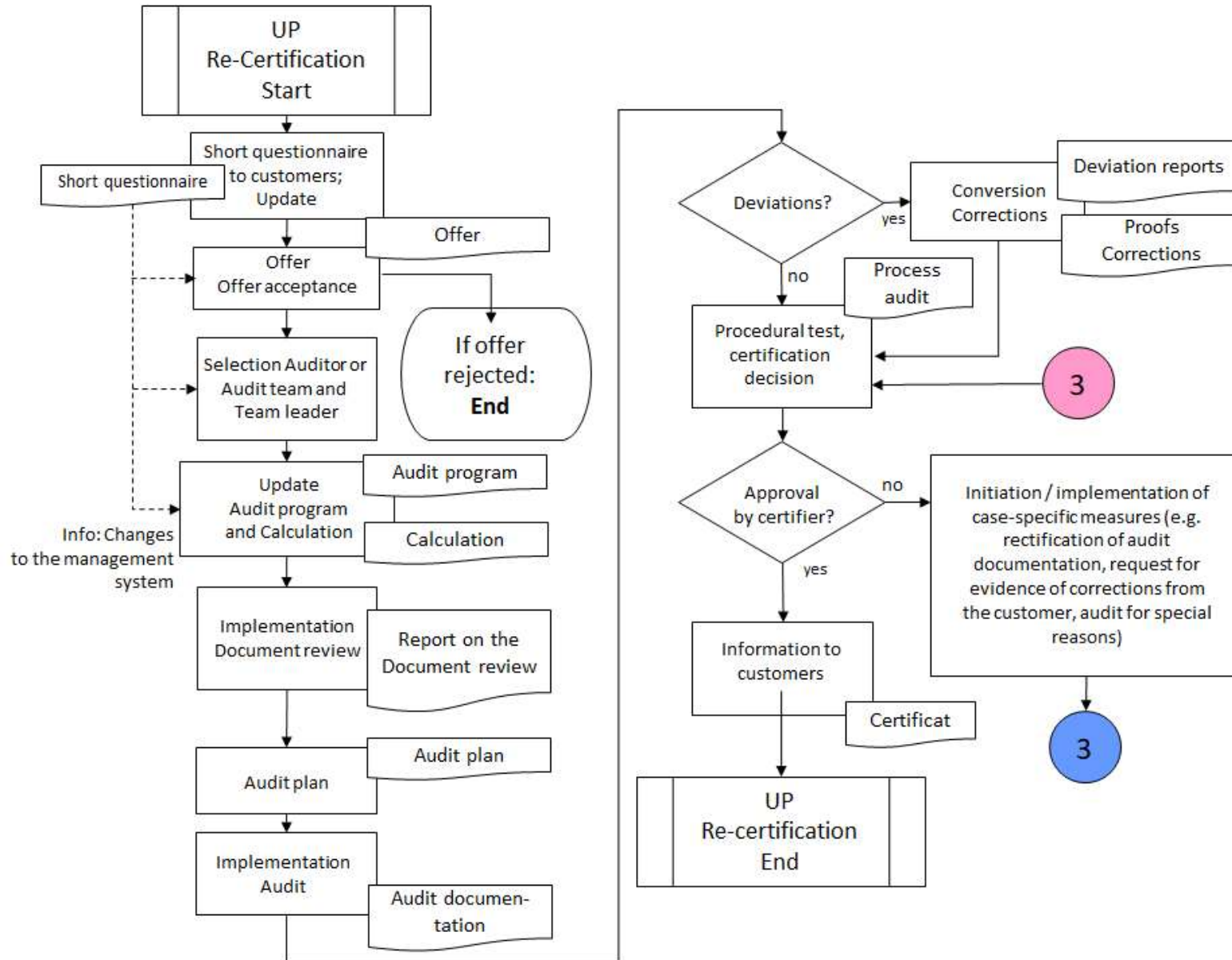
Applicable to the certification of management systems:
 ISO 9001, ISO 13485, ISO 14001, ISO 50001/50003,
 ISO/IEC 27001/27006



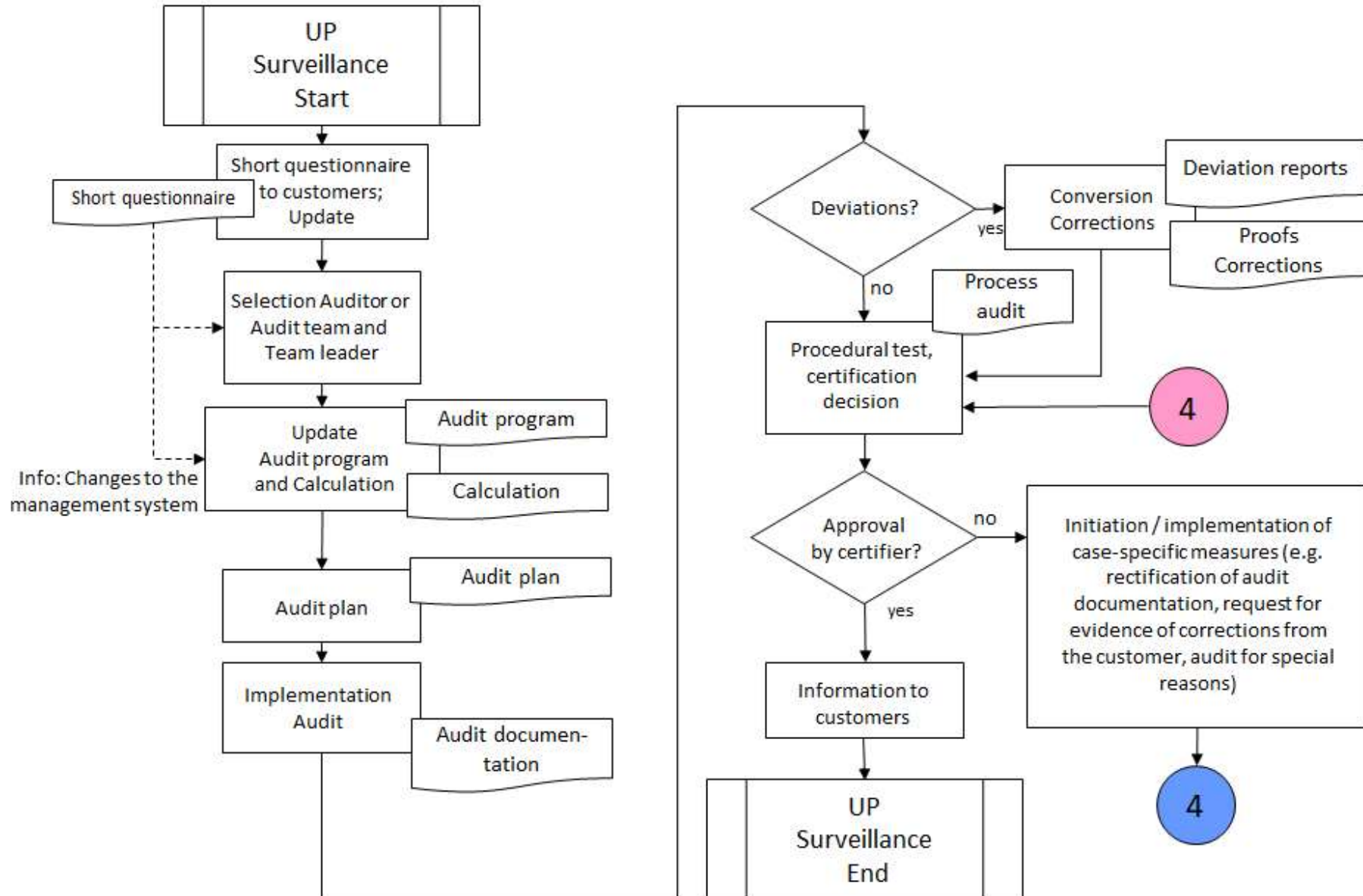
Certification Management Systems



Certification Management Systems



Certification Management Systems



Certification Management Systems

In the management system documentation of the PFI certification and prequalification body, the symbols of the flow charts are designed and used as follows, based on DIN 66001:

